

Engineering Service Consultants LLP.
YOGAH KARMASU KAUSHALAM

PROFILE



Creating Eco life

WATER

Public health engineering services.

01

05

Fire (Energy)

Electrical, Low voltage, Fire protection & life safety services.

02

Earth

Design approach towards eco friendly, Economic & diversity.

03

Space (Time)

Effective usage of real estate spaces, Timely delivery.

04

Air

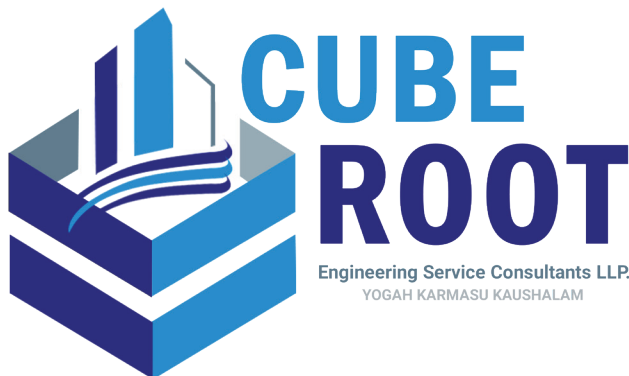
Heating, Ventilation & Air-conditioning services.

Our Vision:

To deliver innovative, top-notch, and cost-effective design solutions to Architects, Developers, and End clients across India by harnessing our expertise, experience, and the profound synergy with the five elemental forces of nature.

Our Mission:

Embracing a dynamic approach for every project to grasp its technical intricacies and crafting bespoke designs equipped with cutting-edge technological advancements in the industry, keeping pace with the ever-evolving landscape of innovation.



About Cuberoot

Cuberoot embodies a dynamic and forward-thinking group of MEP engineers, blending youth, vitality, creativity, and growth. Our team is headquartered in vibrant Bengaluru. Having collaborated with diverse clientele nationwide on a myriad of construction ventures, we have held pivotal roles in esteemed consultancy firms.

Our central focus is on seamlessly connecting ideas to tangible results, from conceptualization to realization. Upholding innovation and efficiency in design as our core values, we prioritize punctual project completion to ensure utmost client satisfaction. At Cuberoot, we strive to deliver top-tier services by streamlining design processes and enhancing precision. We embrace client input and project specifications with open arms.

KNOW
MORE
ABOUT
US

info@cuberootconsultants.com

+ 91 79753 46187

+ 91 97411 70386

+ 91 99642 16516





COMMERCIAL

- IT/ITES
- BASE BUILDING
- FITOUT WORKS
- DATA CENTERS

RESIDENTIAL

- LOW/HIGH RISE BUILDINGS
- VILLA DEVELOPMENTS
- PLOTTED DEVELOPMENTS

MALL & MULTIPLEX

- RETAIL OUTLETS
- F&B OUTLETS

HOSPITALITY

- HOTELS
- RESORTS
- CLUBHOUSE

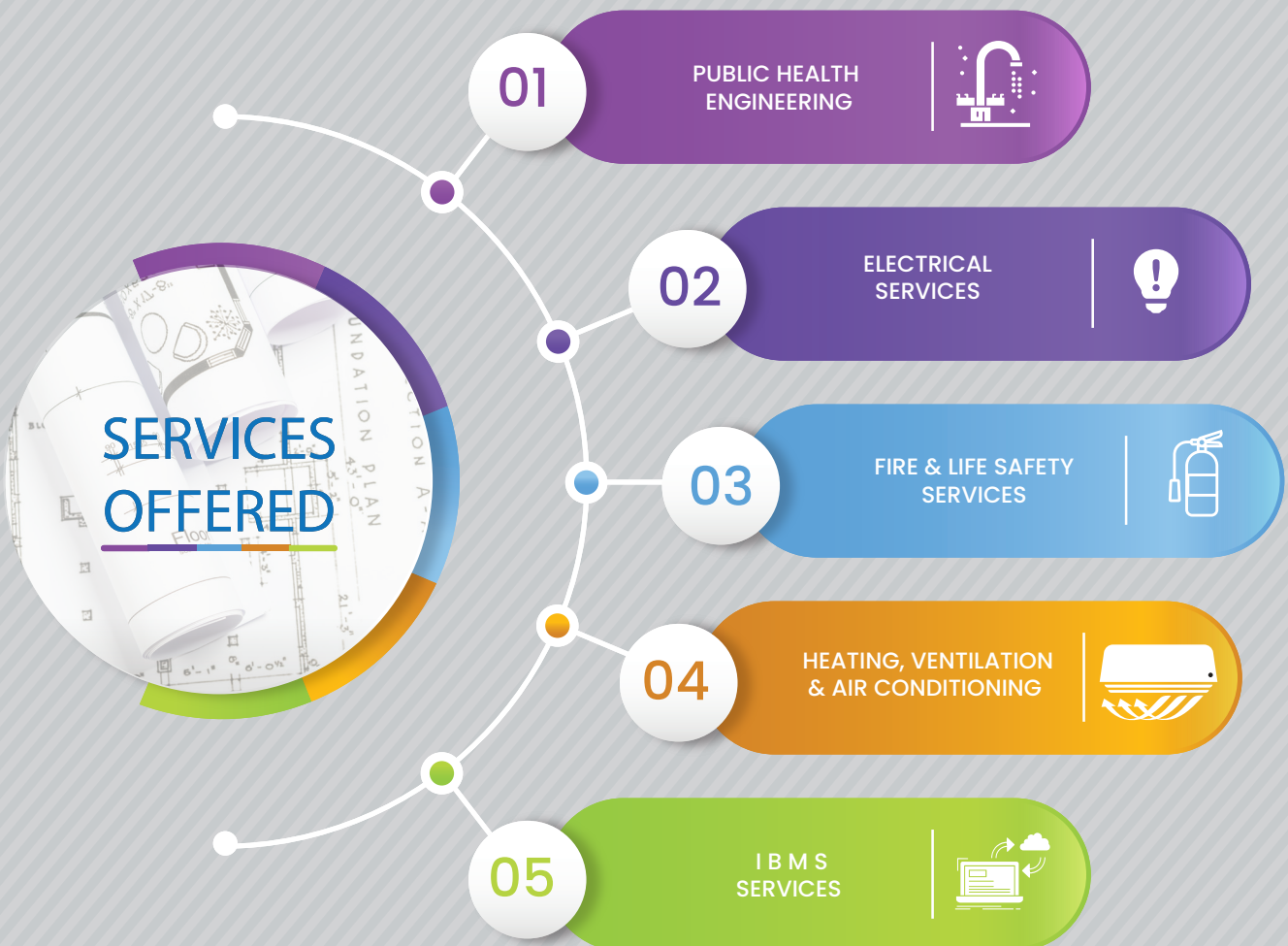
HOSPITALS

- MULTI SPECIALITY
- SUPER SPECIALITY

INDUSTRIALS

- FACTORIES
- WAREHOUSES

CONTRIBUTING OUR BIT TO MAKE SOCIETY
BETTER PLACE TO LIVE BY ADDRESSING
FIVE ELEMENTS OF NATURE
BY OFFERING FOLLOWING SERVICES.





Water-based services that Cuberoot can offer are as follows.

- Domestic & Flushing water supply design & distribution details.
- Single stack / Double stack sewage design.
- Stormwater management with run-off calculation, Rain water harvesting & recharging system.
- Centralized hot water system.
- Solid waste management.
- HSD yard design.

Approach to design of Public health engineering.

- Site survey and understanding of site topography and water network.
- Understanding the customer requirement and mapping the same with codal requirements applicable.
- Design of optimal space required for system design not just considering real estate demand, and vastu factors but also keeping future maintenance needs.
- Proper documentation of communication and records for ease of future reference.
- Coordination with other services and architects for better utilization of space.

ELECTRICAL & LOW VOLTAGE SERVICES

Electrical & Low voltage services that Cuberoot can offer are as follows.

- Design of HT Sub-stations (66kV)
- Sizing of high-side equipment (Transformers & DG Sets)
- Design of MV distribution system (11kV)
- Design of Low voltage (433V) distribution system
- Sizing of UPS & batteries
- Design & Sizing of LT panels & Service rooms
- Design & Sizing of cable network routing through trays
- Design of interior lighting & power sockets
- Conduit network for the lighting and power distribution
- Design of LPS (Lightning protection) & Earthing network
- Design of solar PV system (Power generation)
- Design of EV Charger distribution system
- Design of ELV (Extra low voltage) – Data / Voice / TV network
- Home automation

Approach to design of Electrical engineering services.

- Understanding the architectural design intent of the building and the nature of the building.
- Understanding the customer requirement and mapping the same with codal requirements applicable.
- Understanding the utilities and their load patterns.
- Analyzing the system suitable for each building considering capital cost, operational cost, and maintenance requirements.
- Design of optimal space required for system design not just considering real estate demand but also keeping future maintenance needs.



Fire & life safety services that cuberoot can offer are as follows.

- Designing Fire storage & pumps.
- Designing of Wet riser & Down comer system
- Designing of Sprinkler system.
- Designing of the Detection system.
- Designing of Fire alarm system
- Designing of Public address system
- Designing of portable Extinguisher system

Approach to design of Fire & life safety services.

- Providing necessary inputs to architects for preparation of Fire submission layout
- Designing the fire system in consideration of Authorities' regulations & safety measures.
- Providing the necessary support while getting the approvals.
- Coordination with other services and architects for better utilization of space.



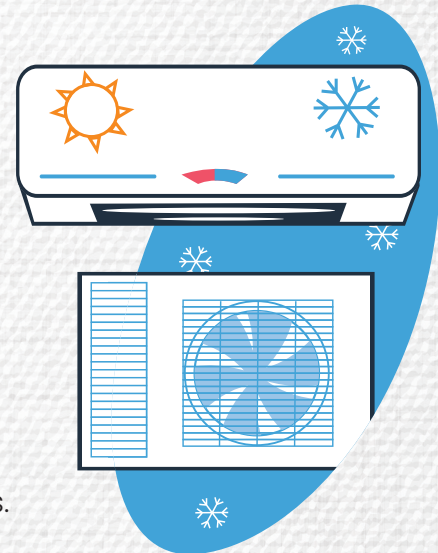
HVAC SERVICES

HVAC services that cuberoot can offer are as follows.

- Design of energy-efficient air conditioning systems for various natures of projects includes
 - Centralized water/air-cooled system design.
 - Water-cooled based VRF system design.
 - Dx-based split /VRF system design.
- Design of ventilation system for various spaces as follows
 - Carpark/utility rooms ventilation system design.
 - Commercial kitchen ventilation system design.
 - Tunnel ventilation system design.
 - Industrial ventilation design.
- Design of pressurization system for staircase, lobby, and liftwell.
- Design of air distribution for fit-out works.
- Condensate recovery and re-use strategies.
- Design of high-side and low-side air-conditioning for data centers.
- Review and renovation strategies, and design for refurbishment projects.

Approach to design of HVAC engineering services.

- Understanding the architectural design intent of the building and the nature of the building.
- Understanding building orientation and elevation to estimate appropriate heat gain to the building.
- Understanding customer requirements and mapping the same with code requirements
- Analyzing the system suitable for each building considering capital cost, operational cost, and maintenance requirements.
- Design of optimal space not just considering real estate demand but also keeping future maintenance needs.
- Proper documentation of communication and records for ease of future reference.
- Coordination with other services and architects for better utilization of space.



WORK FLOW CHART

MEP Questionnaires &
Project directory

STEP
01

List of documents
& drawings required
for laisoning

MEP coordinated
space planning

STEP
02

Authorities related
drawings & documents

STEP
03

Preliminary
calculations,
Concept DBR

Detailed MEP
design documents

STEP
04

STEP
05

Tender drawing &
tender documents

Good for construction
drawings preparation

STEP
06

STEP
07

Monitoring of
execution &
Commissioning



OUR DELIVERABLES

Concept Stage

- ▶ Providing project-specific questionnaires.
- ▶ Preparation of MEP space requirement & Preliminary calculations for MEP services.
- ▶ Evaluation of various alternative systems with cost analysis.
- ▶ Conceptual presentation to architect & client.
- ▶ Preparation of concept design brief report.
- ▶ Generating required details for sanction purposes.
- ▶ Providing preliminary budget.

Design Stage

- ▶ Providing MEP-related inputs to structural, Green building & other consultants.
- ▶ Preparation of MEP detailed design calculations as below:
 - Load calculation using advanced software tools.
 - Pipe diameter calculation.
 - Hourly load analysis.
 - Electrical demand calculation.
- ▶ Preparation of detailed engineering working drawings below
 - All floors working drawings.
 - Schematic diagrams.
 - Plant room details.
 - Coordinated MEP layouts with structural inputs.
- ▶ Providing detailed design brief report.
- ▶ Detailed design presentation to architect & client.

Tender & GFC Stage

- ▶ Preparation of tender drawings.
- ▶ Preparation of technical specifications.
- ▶ Preparation of BOQ & estimates.
- ▶ Co-ordinating with cost consultants/PMC/client.
- ▶ Preparation & submission of final GFC drawings.

Construction Stage

- ▶ Review & approval of shop drawings.
- ▶ Review & approval of technical submittals.
- ▶ Supervision of execution & submission of site visit reports.
- ▶ Supervision of commissioning activity.
- ▶ Providing final inspection reports with completion certificate.
- ▶ Review & approval of As-Built drawings.



Mr. Prasad M is the managing partner of Cuberoot Engineering Service Consultants LLP.

Mr. Prasad M obtained his B.tech (Civil Engineering) from IBVC. He has over 18 years of experience and skill in Public Health Engineering design for a wide range of structures, including highrise residential, planned projects, commercial, hotels, educational institutions, hospitals, shopping malls and multiplexes, and industrial.

His expertise includes the proper selection of distribution systems, rainwater collection and reuse strategies, storm water network systems, sewage treatment system selection, and solid waste management system design. He is a specialist in coordinating with other providers to optimize space utilization.

Mr. Prasad M formerly worked as Associate Technical Director at DesignTree Service Consultants Pvt Ltd He has also contributed his expertise as a Design Engineer at renowned organizations such as M/s. Aecom India Pvt. Ltd. and M/s. Potential Service Consultants (P) Ltd. With an impressive 18 years of comprehensive experience in the industry, he has successfully spearheaded numerous prestigious projects, showcasing his exceptional skills and unwavering dedication for the following:

Taj hotels | Country Inn hotels | RMZ Ecoworld campus | Bagmane Temple bells | Mantri Pinnacle | Prestige lakeside Habitat | Hinduja Ecopolise | Divysaree technopark campus | Brigade Meadows | Agadi hospital | Elements mall | HOJO hotel | ETA Namma mall | Triveni turbines | Lulu Mall at Trivandrum & Lucknow | Seabird Karwar



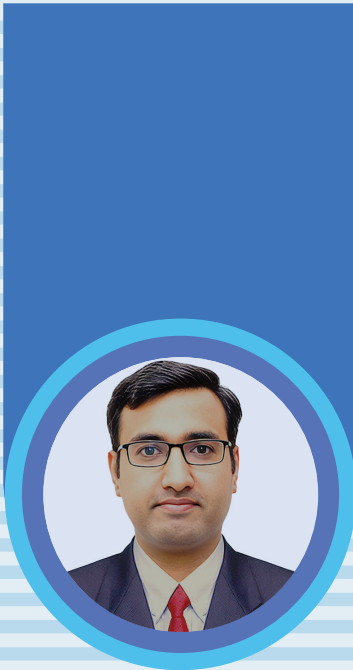
Mr. Prasad. M

B.tech in Civil Engineering
from IBVC.

+91 79753 46187

prasad@cuberootconsultants.com

Life member of Indian Plumbing Association



Mr. Vijayendra B. N

Bachelor of Engineering
from VTU.

+91 97411 70386

vijay@cuberootconsultants.com

Member at ISHRAE and ASHRAE chapters.

Mr. Vijayendra B. N is the Managing Partner at Cuberoot Engineering Service Consultants LLP.

Mr. Vijayendra B. N earned his Bachelor of Engineering from VTU in Belgaum. He has over 16 years of experience and expertise in HVAC system design for a variety of buildings including highrise residential, commercial, hotels, educational institutions, hospitals, malls, multiplexes, and industrial.

His experience involves the use of several advanced software tools for estimating HVAC loads and selecting the best HVAC system for each project, which benefits the end user by lowering capex, Opex, and maintenance expenses. His primary focus and goal is to design each space for improved indoor air quality, sustainability, and optimum energy efficiency in order to provide the customer with the highest level of system performance to achieve a comfortable temperature.

Mr. Vijayendra B. N formerly worked as Associate Technical Director at DesignTree Service Consultants Pvt Ltd and as Senior Design Engineer at SEED Engineering Service Consultants Pvt Ltd. He has experience with international projects and processes.

The following are some of the major projects he worked on throughout his career.

IT commercial building - **INTEL SRR4 | Phoenix BHUB/H10 | Divaysree | LSR Tudor | Rajapushpa | K Raheja Mindspace campus**

IT fitout works- **Google Carina & Virgo | Goldman Sachs | Qualcomm**

Hospital - **AIIMS hospital at Bibinagar | Sparsh Hospital**

Mall - **LULU mall at Trivandrum and lucknow**

Hotel - **Country Inn**

Datacenters - **Ctrls, Chennai**

Industries - **Pepsico factory at Aurangabad**

Mr Guruprasad P is the managing partner of Cuberoot Engineering Service Consultants LLP

Mr. Guruprasad P has done B.Tech (Electrical) from The Institution of Engineers. India (Kolkata). He has over 17 years of experience and expertise in Electrical design systems for various developments including Highrise residential, Commercial, Hotels, Educational institutions, Hospitals, Malls, Office Fitouts, Laboratories, Urban planning, Plotted developments, Resorts, High voltage substations and Industries.

His experience involves in the selection of the suitable system of Electrical power distribution, Selection of Transformers and DG Sets. Sizing of UPS system, Renewable energy solutions, Sustainability and focused approach towards the energy savings and monitoring.

Mr. Guruprasad P has formerly worked as Principal Team lead at DesignTree service consultants PVT Ltd and as Design engineer at Sripeksha engineering consultancy services PVT Ltd and Micron Electricals.

The following are some of the major projects he worked on throughout his career.

Residential – **Prestige Jindal city | Assetz Marq | Divyasree Technopolies | Concorde Mayfair | Godrej United**

IT commercial building – **Divyasree Technopolies | Prestige Techforest | RMZ Ecoworld | Sattva Knowledge point | Sumadhura Capitol towers**

IT fit out works– **Goldman Sachs | Qualcomm | HP | Mindtree | Wipro | Hitachi**

Laboratories – **Hitachi | Schneider**

Hospital – **AIIMS hospital at Bibinagar | Sparsh Hospital | Lotus Hospital | Narayana Hrudayalaya**

Hotel – **JW Marriot**

Data centres – **CtrlS, Sify.**

Industries – **Merck Millipore | Manjushree Techno packs | Jindal Steel**

Urban Planning – **Seabird (Navy Base) @ Karwar**

Plotted Developments – **Prestige | BREN | Address Makers**



Mr. Guruprasad. P

B.Tech in Electrical Engineering
from IET Kolkata

+91 99642 16516

guruprasad@cuberootconsultants.com

OUR CLIENTILE



OUR PROJECTS

**Sree
Panchanan
Residency**
Bhubaneswar



**Bren
Imperia**
Bengaluru



OUR PROJECTS



Anantara
Bhubaneswar



Refurbishment of
services
**Satsang
ashram**
Jharkhand

OUR PROJECTS



Multispeciality Hospital Nagarabhavi Bengaluru



Brookfield NXT

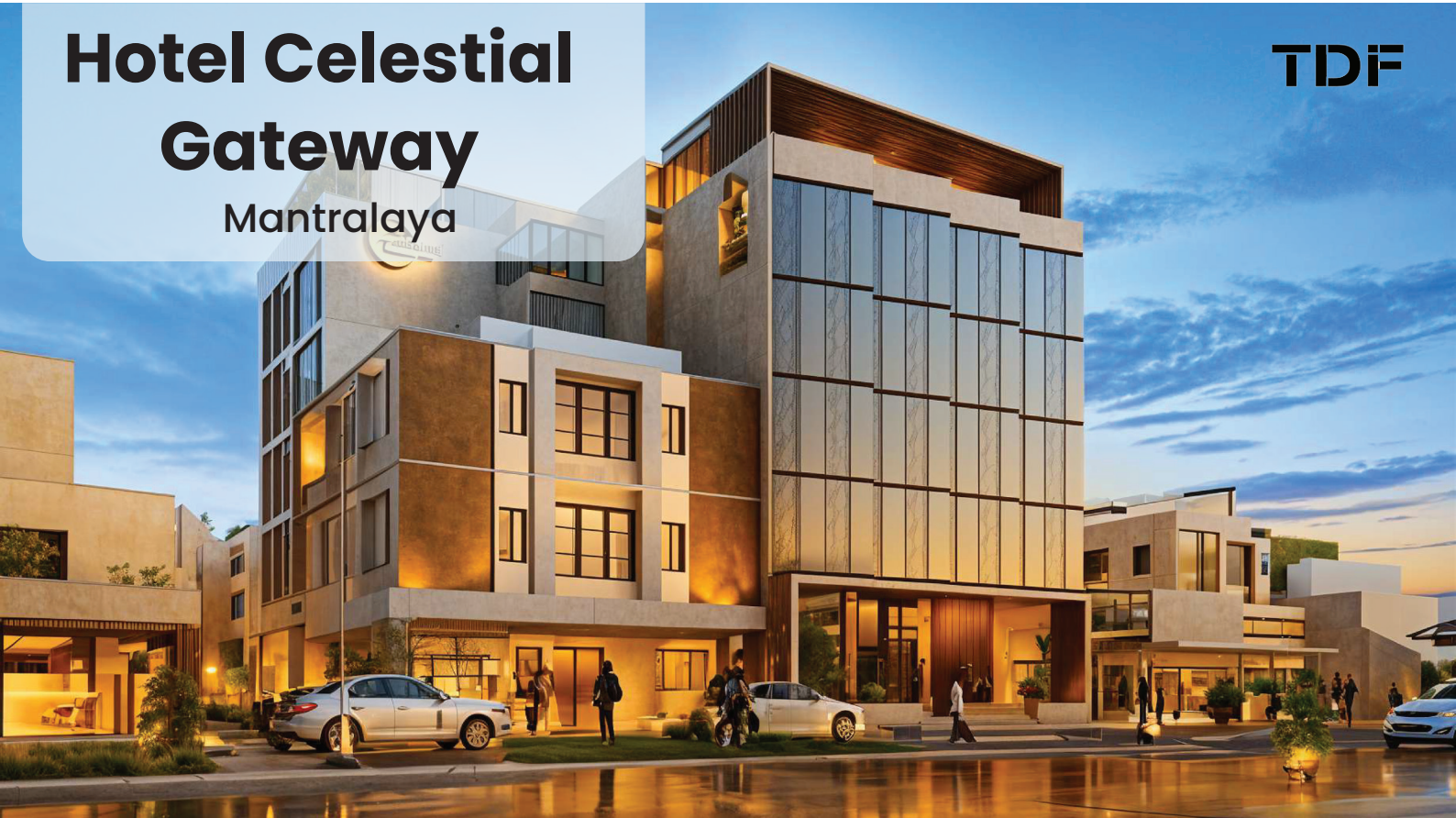
Bengaluru

OUR PROJECTS

Hotel Celestial Gateway

Mantralaya

TDF



Renram International

Bangalore

TDF

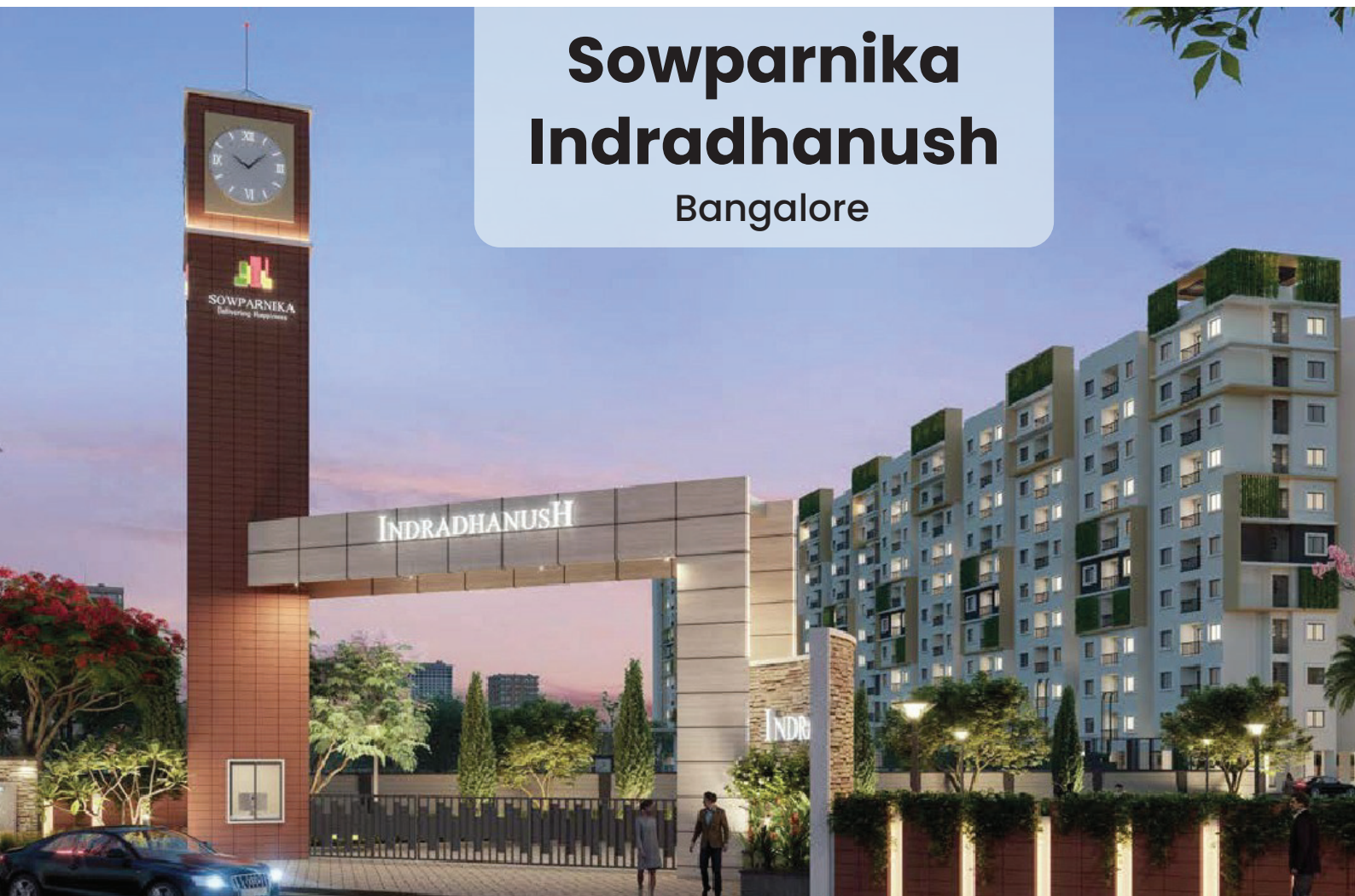


OUR PROJECTS

**Sowparnika
Olivia**
Bangalore



**Sowparnika
Indradhanush**
Bangalore



OUR PROJECTS



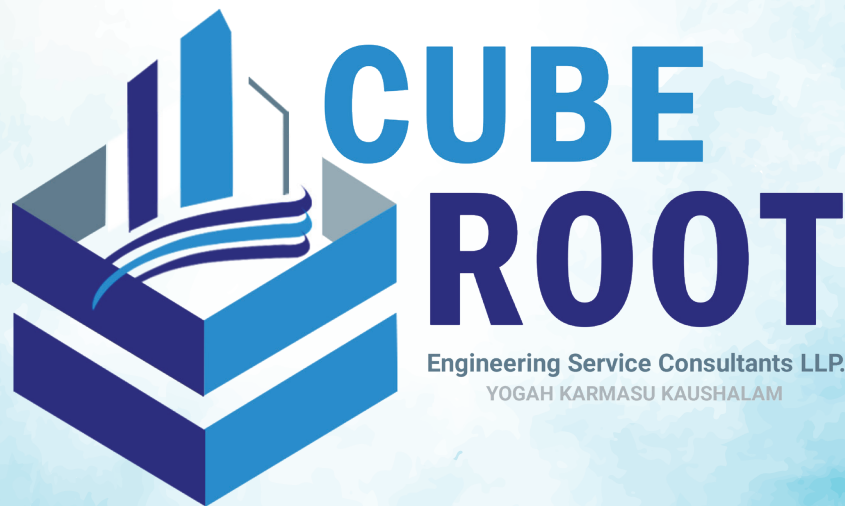
**RCB
cafe**

Bangalore



**Courtyard
at 71**

Bhubaneswar



**#771, 3rd floor, 5th main, Vikram Nagar,
ISRO Layout, Bengaluru - 560078**